



AC-56b category



AC-56b : Switching of capacitors banks

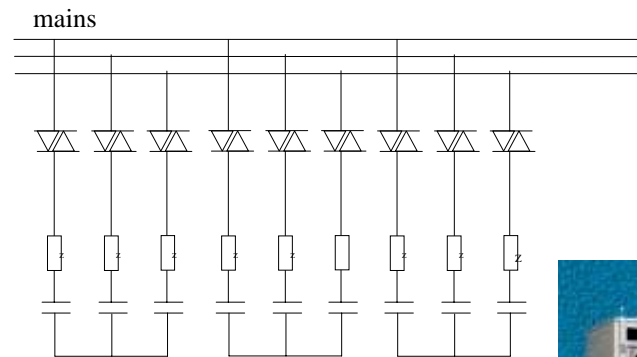
**Overload voltage : $U = 2 \text{ to } 3x U_n$
depending on the control**

Precautions:

Very low zero cross level SSR

High immunity SSRs

High di/dt limitation



SC885100 : 1600V 50A AC-51

13A AC-56b ==> 9 kVAR

SC887100 : 1600V 75A AC-51

24A AC-56b ==> 16 kVAR

SC888100 : 1600V 95A AC-51

36A AC-56b ==> 25 kVAR

SC889100 : 1600V 125A AC-51

48A AC-56b ==> 33 kVAR



Capacitors

Power bank

Factor

Correctors

relays

