



# Newsletter

## December 2018



### SOI Range :

#### New range of SSRs with Diagnostics with a current transformer (CT) built-in on the load side controlling a feedback status switch.

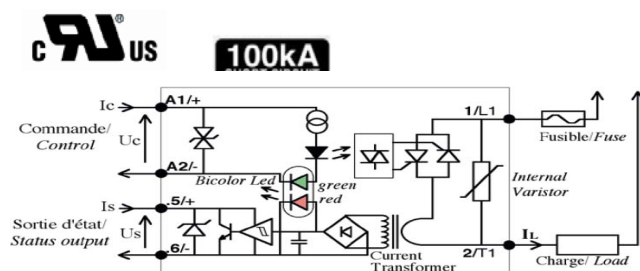
Heating control used in thermoforming machines requires occasional connection or disconnection of the heating zones depending on the pre-heating area (foil size). Standard diagnostic relays or systems using external CTs would display an error with these zone disconnections.  
The SOI range power ON/OFF the load and simply gives the information about the load current flow, leaving the status interpretation to the user or the system.

Advantages :

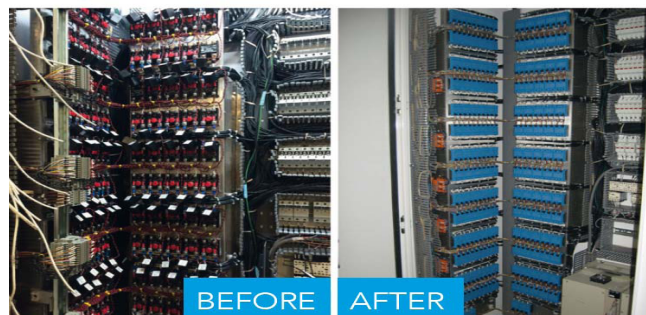
- Less wiring : saving cost and time
- Elimination of pass through CT wires
- Elimination of costly analog PLC inputs

Available part number : [SOI885070](#)

This product is now certified cUL and cURus 100kA :



[Technical data-sheet](#)



celduc relais will be closed on the 24th, 25th and 31st of December 2018 as well as the 1st of January 2019.

We wish you all a Merry Christmas and a good start for 2019 !



Interested in a virtual visit of celduc ?  
[Follow the link !](#)



A forum is now available on celduc's website.

This space is reserved to your questions related to our products.

## celduc® relais' solutions for packaging industry

celduc® relais has exhibited its products at ALL4PACK in Paris from the 26th to the 29th of November.

This event was the occasion to show our new control box for temperature control of infrared lamps.

For sure this new visionary product will have lots of success !

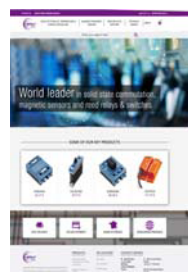


Tel. Sales department France :  
+33 (0) 4 77 53 90 20

Tel. Export Europe :  
+33 (0) 4 77 53 90 21

Tel. Export Asia :  
+ 33 (0) 4 77 53 90 19

Tel. Export America :  
+ 33 (0) 4 77 53 90 21



[e-catalogue celduc relais](#)

## Power controller EIRC



(For more  
information, please  
contact us)

Anticipating market trends and needs, celduc® relais has developed a control box for fine temperature control of infrared lamps. These control boxes are equipped with 12 solid state relays and a built-in microcontroller based regulation card.

This gives very accurate regulation and also includes a communication interface that can be directly connected to a supervisory system to give load status and other parameters..

### **Main characteristics of the heating control unit :**

- Heating control unit available for up to 12 IR lamps (4kW max per power outputs)
- Control loop based on mains voltage ( $U^2$  control regulation)
- Fault condition alarms : broken lamp < 250ms ; output overvoltage ; device over temperature; broken fuse
- Integrated Protection
- Profibus DP control

**Typical Application :** Blow molding machines



You can delete your subscription at any time,  
(according to the article 34 of the french law concerning the computer science laws).

To unsubscribe to the mailing list - [Click here](#)