

1 Minimum requirements

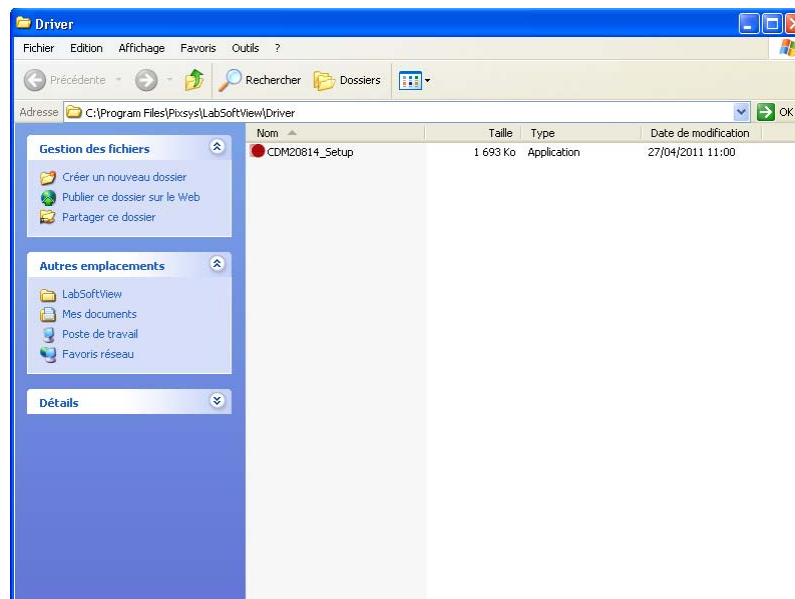
LabSoftView relies on Microsoft.NET Framework 2.0. Should this component not be already available on your PC, it will be automatically installed.

Compatible/Supported Operating Systems: Windows 2000 Service Pack 3; Windows 98; Windows 98 Second Edition; Windows ME; Windows Server 2003; Windows Vista Business; Windows Vista Business 64-bit edition; Windows Vista Enterprise; Windows Vista Enterprise 64-bit edition; Windows Vista Home Basic; Windows Vista Home Basic 64-bit edition; Windows Vista Home Premium; Windows Vista Home Premium 64-bit edition; Windows Vista Starter; Windows Vista Ultimate; Windows Vista Ultimate 64-bit edition; Windows XP Service Pack 2.

2 How to install LabSoftView

2-1 Start **Setup.msi** (Type : Package Windows Installer).

2-2 The software will open a window which allows the user to install also the **Driver CDM20814_Setup** which should be also installed.



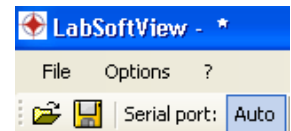
3 How to start LabSoftView

Once the software and drivers have been successfully installed, the system is ready to use. This paragraph will suggest some basic steps in order to get acquainted with the application and verify the correct operation of all parts.

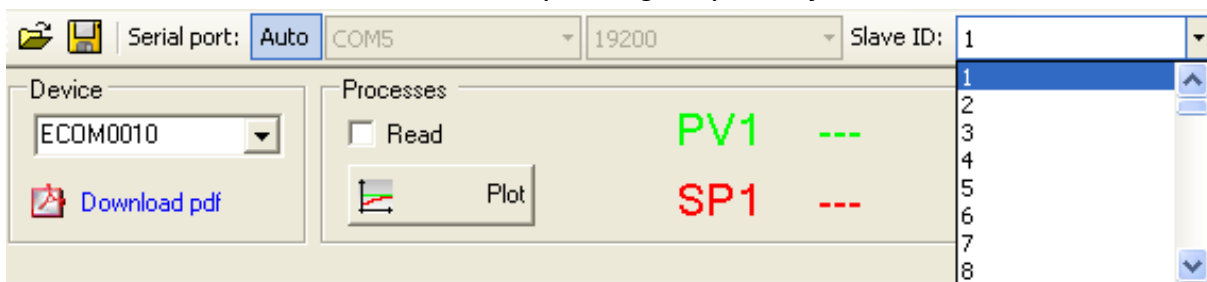
3-1 **Make the connection** to an USB port of your PC

3-2 **Start LabSoftView** (Icon should be on your desktop).

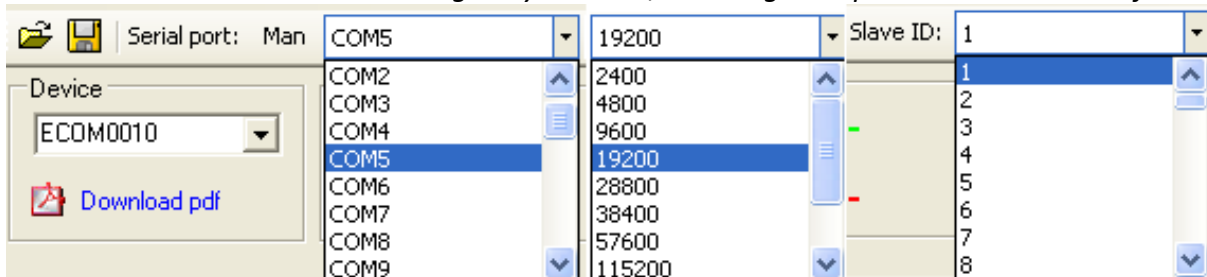
3-3 The toolbar includes an area labelled as **“Serial port:”** which contains all options related to communication with the device. Make sure that option **“Auto”** is selected and that value for field **“Slave ID”** is 255.



“Auto” => communication is automatically managed by the software

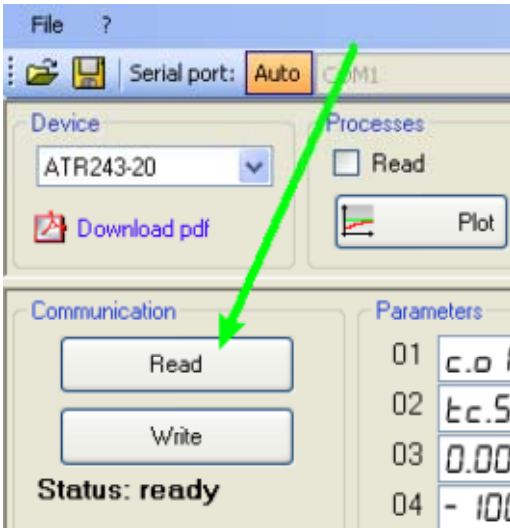


“Man” => communication is managed by the user, selecting the options in the relevant fields.

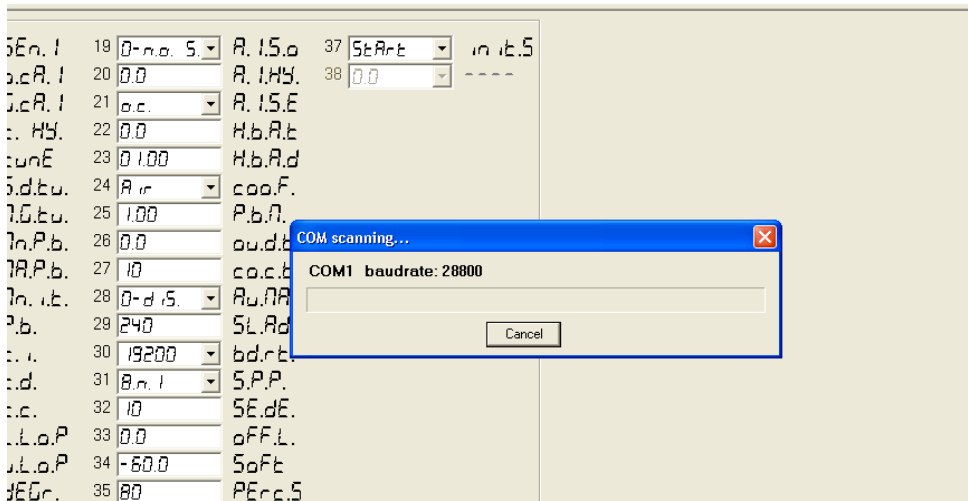


3-4 Reading

To start reading the parameters, press button as shown below.

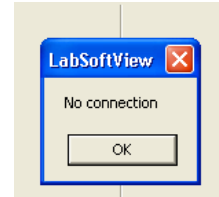


If option **Auto** is selected, the software will make a scanning of serial ports to find out the virtual port.



If communication panel visualizes the writing “Successful read”, it means that communication works properly and the system has been set correctly.


If following message appears, it will be necessary to connect manually the demo and check each previous step.



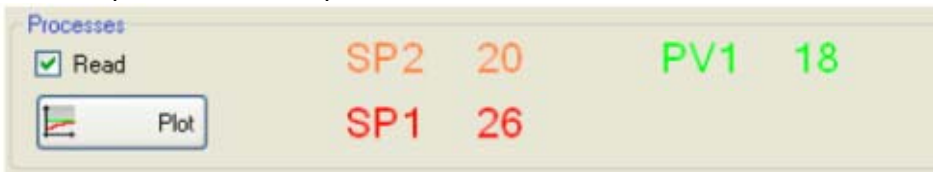
4 Overview

Menu and toolbar have already been introduced in the previous chapter about automatic communication mode.

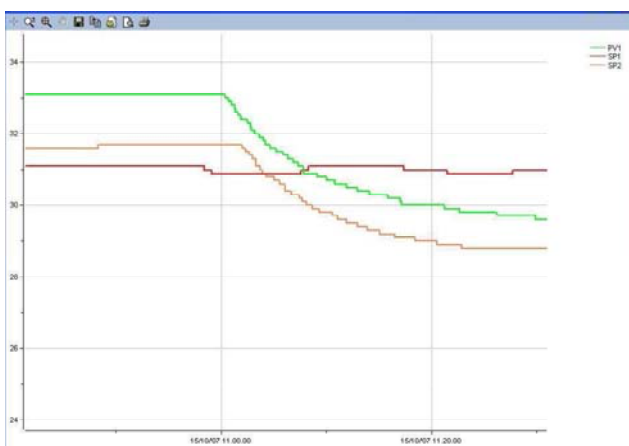
The **manual mode** can be useful if LabSoftView should be connected to more devices using different ports. For this same reason, it might be necessary to set for parameter "Slave ID" a value other than 255.





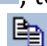
The buttons  are conceived for the management of configuration files, which include the selected device and the values of all parameters and set-points.

If option "**Read**" is selected in the field Processes (see below) it is possible to visualize the values of process and set-point for the connected device.



The button "**Plot**" opens a window for the graphic visualization of processes



The buttons on toolbar enable to zoom in and enlarge a specific area of diagram , to show its precise value at a certain point , to print , save as bitmap file  or text file  all stored values.

Press button "**Write**" to write/download parameters values on the device.